

AIRLIE PROFESSIONAL CENTER

1508 MILITARY CUTOFF ROAD—WILMINGTON, NC



*Exceptional Class A Office
in Military Cutoff Corridor*

Available For Lease

- **Suite 206:** 3,168 RSF (includes 15% core factor)
- **Features:** Reception/waiting area, conference room, 5 private offices, large work area, storage & kitchen.
- **Reduced Lease Rate:** \$19.50 PSF; full service, net janitorial
- **Available:** March 1, 2017

Please see reverse for floor plan.

*Great Location with
Frontage & High Visibility
on Military Cutoff Road*

Location

Airlie Professional Center is located on 1508 Military Cutoff Road between Eastwood Road and Wrightsville Ave. Just minutes to Mayfaire and Wrightsville Beach, this area is convenient to shopping, dining, and a variety of professional services.



COMMONWEALTH
COMMERCIAL PROPERTIES

Please contact

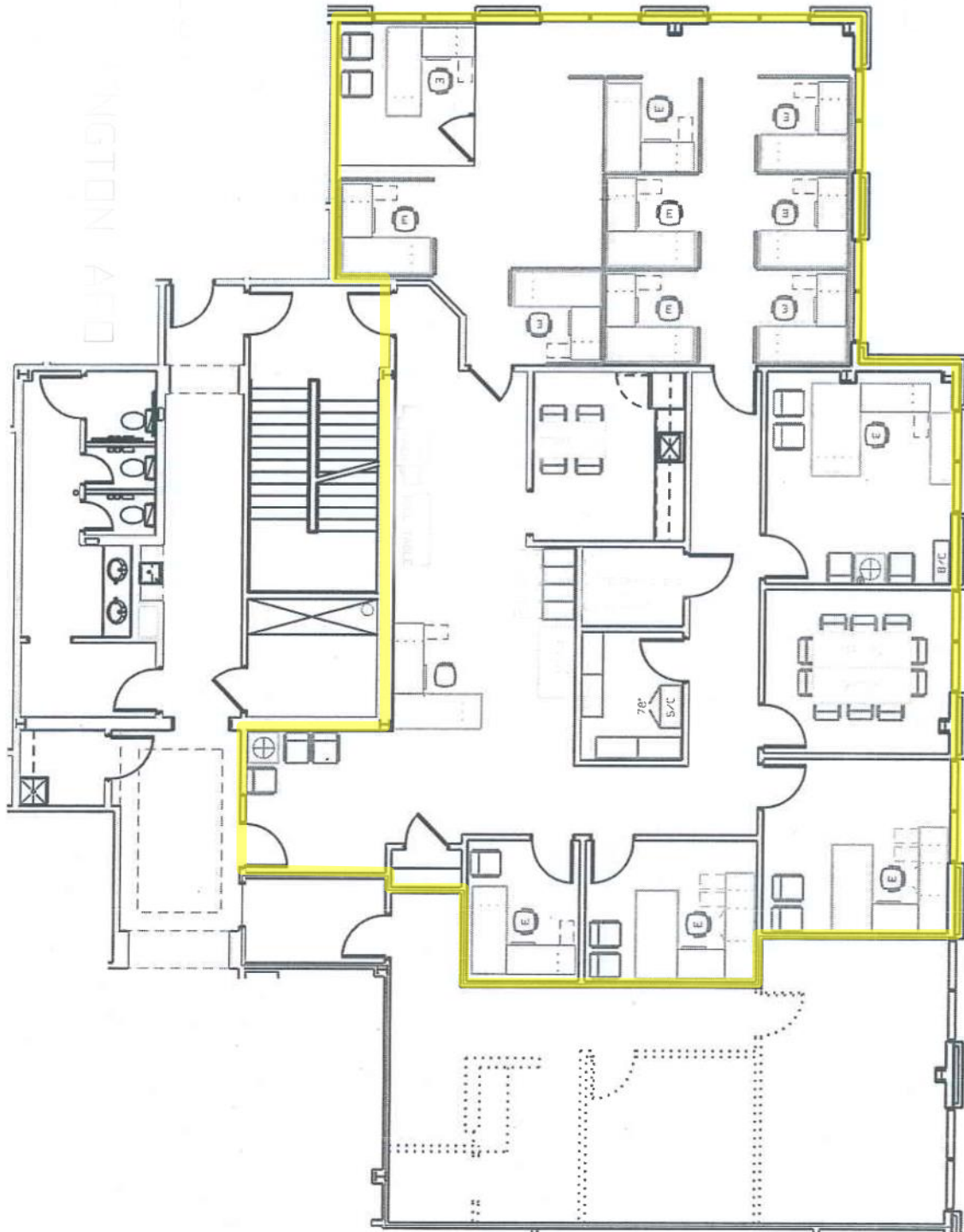
Hae Newkirk

910.232.4744 hae.newkirk@ccprealty.com



1017 ASHES DRIVE · SUITE 204 · WILMINGTON, NC 28405
910.256.6477 · 800.929.7780 · WWW.CCPREALTY.COM

1508 MILITARY CUTOFF ROAD | SUITE 206



COMMONWEALTH
COMMERCIAL PROPERTIES

Please contact

Hae Newkirk

910.232.4744 hae.newkirk@ccprealty.com